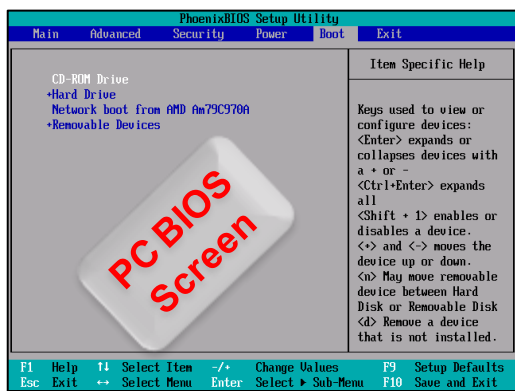


# LPS-Public Quick Start Guide

This guide is for the beginner user to create and use a Lightweight Portable Security – Public Edition (LPS-Public) CD to more securely browse the Internet and access CAC-enabled websites. For more information on LPS-Public, see <http://www.spi.dod.mil/lipose.htm>. LPS-Public focuses on safe browsing; it supports thumb drives but intentionally lacks drivers (support) for hard drives and printers.

1. Create a bootable CD from the ISO image (\*.iso, an image file of an optical disc).
  - a) Download and save the LPS-Public ISO image from <http://www.spi.dod.mil/lipose.htm>.
  - b) Burn the image to a blank CD using ISO software (e.g., UltraISO, ISO Maker, K3b, CDBurnerXP, Easy CD Creator, ImgBurn, CDBurn, Nero Burning ROM, Roxio Creator, or one of many others but ATSPI endorses none). This is not the same as just saving the file to a CD.
  - c) Write the LPS version number on the CD.
2. Connect your PC or Intel-based Mac to a wired Ethernet network with DHCP service, or have a wireless (WiFi) or broadband cellular network available.



3. Connect a USB CCID-compliant CAC reader to your PC. Many built-in readers are not supported. Insert your CAC into the reader. If you have an old or non-CCID reader, you may need new firmware from the OEM. LPS contains a Firmware Updating utility that you should run.

4. Insert the LPS-Public CD into the CD drive. Restart your computer. It may take a few minutes to boot LPS. If LPS-Public doesn't boot:

- a) Configure your computer to boot from a CD. On a Mac, simply hold down the "option" key during the boot process and select the CD. On a PC (see figure left), immediately after power on press the correct key to open the BIOS menu. Typically the correct key for Acer is DEL or F2; Compaq and HP F10; Dell, NEC, and Sharp F2 or F12; Gateway and IBM F1; HP and Toshiba F1 or ESC. Change BIOS boot priority — CD *before* the hard drive.
- b) Try an older computer. This LPS-Public version may not have drivers to support the newest computers.

6. Launch the Firefox browser. When entering a CAC-enabled website and prompted for a Master Password, enter your CAC's PIN, and then select the proper CAC (ID or email) certificate.

7. If the page fails to load, an error message occurs, or the Master Password window doesn't open, try reloading the page.

8. If LPS-Public freezes or you wish to quit, simply remove the CD and turn off your PC. Reboot the PC to return to its normal, unchanged operating system.